



UNIVERSITY OF RUHUNA

Faculty of Engineering

Mid-Semester 5 Examination in Engineering: June 2014

Module Number: CE5218

Module Name: Design of Steel Structures

[Two Hours]

[Answer all questions, marks for Questions are as indicated]

Code of Practices BS 5950 Part I (2000) is provided

- Q1. A single angle section of size $90 \times 90 \times 8$ has been proposed for a tension member shown in Fig. Q1. It is made of Grade S275 steel and connected to a gusset plate using three staggered bolts. It is estimated that the tensile force at ultimate loading condition is 100 kN.
- Check whether the proposed single angle section is sufficient to carry the design tensile force.
[5.0 Mark]
 - Comment on how the tensile capacity would be affected when the three bolts are placed in a single row.
[1.0 Mark]
- Q2. A truss structure used for a steel bridge is shown in Fig. Q2. The structural analysis shows that the top chord is subjected to compression force of 240 kN at the ultimate loading conditions. It is proposed to use a back-to-back double angle section made of n equal angle sections of size $125 \times 75 \times 10$ for the top chord. The angle sections are connected to both side of a gusset plate (i.e. 10 mm thick) at each joints using more than two bolts in standard clearance holes, in line along the member. The member is interconnected at every 500 mm. Assume that lateral restraints to the top chord are provided at joints A, B, C, D, and E. The Grade of steel is S275.
- Check the suitability of proposed trail section for the top chord.
[6.0 Marks]
 - Suggest two methods to enhance the compression capacity of the proposed double angle compression member.
[1.0 Mark]
- Q3. It is proposed to build a 'Chaithya' at a temple located in a low land in Galle area. As it has been observed that the temple is flooded even for mild rainfall. Therefore suggestion is to build the Chaithya on an elevated concrete platform. The concrete platform is planned to rest on steel columns located at 5 m spacing grids as shown in Fig. Q3. The height of the columns from the finish floor level to the bottom of the concrete soffit is 3 m. Consider the columns are partially restrained in position and in direction about both axes at both ends. The unfactored dead and imposed loads on the concrete platform are 60 kN/m^2 and 50 kN/m^2 respectively, and they are transferred to the columns as axial compression forces.

- a) Calculate design compression force for a typical internal column. [2.0 Marks]
- b) Check whether 254×254×107 UC section is sufficient to carry the design axial compression force. [4.0 Marks]
- c) If the capacity is inadequate, suggest two methods to improve the compression capacity of the column. [1.0 Mark]

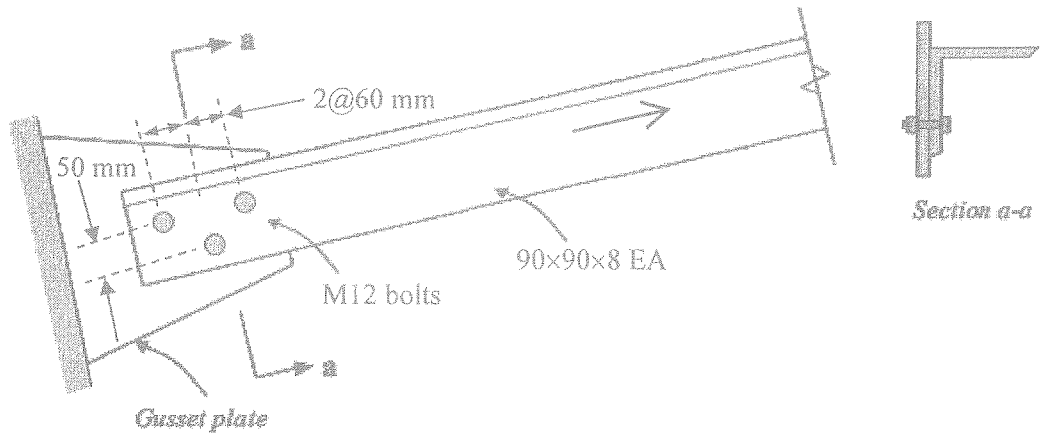


Fig. Q1

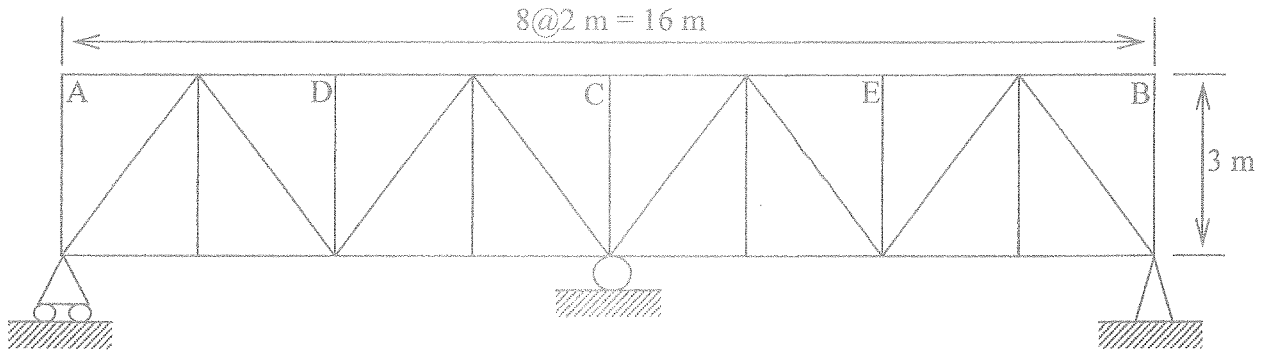


Fig. Q2

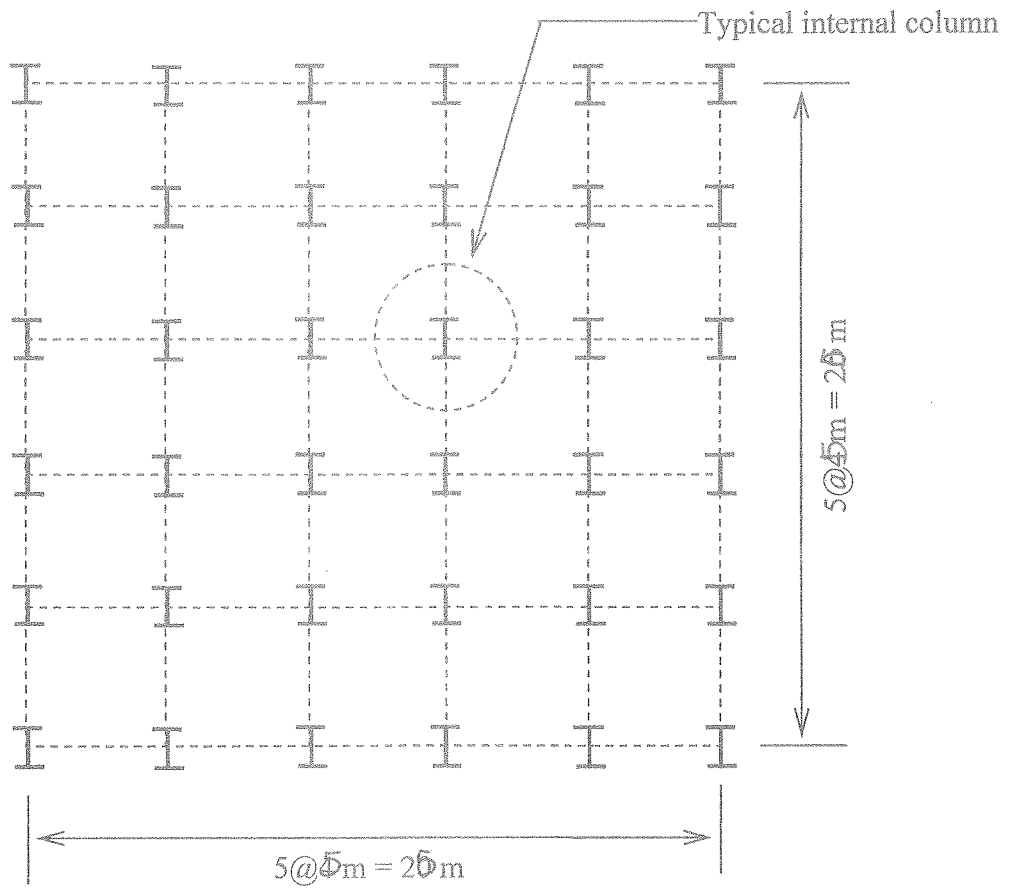
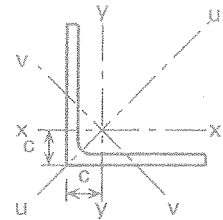
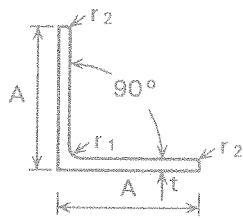


Fig. Q3

EQUAL ANGLES

Advance UKA - Equal Angles



Dimensions and properties

Section Designation		Mass per Metre	Radius		Area of Section	Dimension	Second Moment of Area			Radius of Gyration			Elastic Modulus	Torsional Constant	Equivalent Slenderness Coefficient
Size	Thickness		Root	Toe			Axis x-x, y-y	Axis u-u	Axis v-v	Axis x-x, y-y	Axis u-u	Axis v-v			
A x A mm	t mm	kg/m	r ₁ mm	r ₂ mm	cm ²	c cm	cm ⁴	cm ⁴	cm ⁴	cm	cm	cm	cm ³	J cm ⁴	φ _B
200x200	24	71.1	18.0	9.00	90.6	5.84	3330	5280	1380	6.06	7.64	3.90	235	182	2.50
	20	59.9	18.0	9.00	76.3	5.68	2850	4530	1170	6.11	7.70	3.92	199	107	3.05
	18	54.3	18.0	9.00	69.1	5.60	2600	4150	1050	6.13	7.75	3.90	181	78.9	3.43
	16	48.5	18.0	9.00	61.8	5.52	2340	3720	960	6.16	7.76	3.94	162	56.1	3.85
150x150	18 +	40.1	16.0	8.00	51.2	4.38	1060	1680	440	4.55	5.73	2.93	99.8	58.6	2.48
	15	33.8	16.0	8.00	43.0	4.25	898	1430	370	4.57	5.76	2.93	83.5	34.6	3.01
	12	27.3	16.0	8.00	34.8	4.12	737	1170	303	4.60	5.80	2.95	67.7	18.2	3.77
	10	23.0	16.0	8.00	29.3	4.03	624	990	258	4.62	5.82	2.97	56.9	10.8	4.51
120x120	15 +	26.6	13.0	6.50	34.0	3.52	448	710	186	3.63	4.57	2.34	52.8	27.0	2.37
	12	21.6	13.0	6.50	27.5	3.40	368	584	152	3.65	4.60	2.35	42.7	14.2	2.99
	10	18.2	13.0	6.50	23.2	3.31	313	497	129	3.67	4.63	2.36	36.0	8.41	3.61
	8 +	14.7	13.0	6.50	18.8	3.24	259	411	107	3.71	4.67	2.38	29.5	4.44	4.56
100x100	15 +	21.9	12.0	6.00	28.0	3.02	250	395	106	2.99	3.76	1.94	35.8	22.3	1.92
	12	17.8	12.0	6.00	22.7	2.90	207	328	85.7	3.02	3.80	1.94	29.1	11.8	2.44
	10	15.0	12.0	6.00	19.2	2.82	177	280	73.0	3.04	3.83	1.95	24.6	6.97	2.94
	8	12.2	12.0	6.00	15.5	2.74	145	230	59.9	3.06	3.85	1.96	19.9	3.68	3.70
90x90	12 +	15.9	11.0	5.50	20.3	2.66	149	235	62.0	2.71	3.40	1.75	23.5	10.5	2.17
	10	13.4	11.0	5.50	17.1	2.58	127	201	52.6	2.72	3.42	1.75	19.8	6.20	2.64
	8	10.9	11.0	5.50	13.9	2.50	104	166	43.1	2.74	3.45	1.76	16.1	3.28	3.33
	7	9.61	11.0	5.50	12.2	2.45	92.6	147	38.3	2.75	3.46	1.77	14.1	2.24	3.80
80x80	10	11.9	10.0	5.00	15.1	2.34	87.5	139	36.4	2.41	3.03	1.55	15.4	5.45	2.33
	8	9.63	10.0	5.00	12.3	2.26	72.2	115	29.9	2.43	3.06	1.56	12.6	2.88	2.94
75x75	8	8.99	9.00	4.50	11.4	2.14	59.1	93.8	24.5	2.27	2.86	1.46	11.0	2.65	2.76
	6	6.85	9.00	4.50	8.73	2.05	45.8	72.7	18.9	2.29	2.89	1.47	8.41	1.17	3.70
70x70	7	7.38	9.00	4.50	9.40	1.97	42.3	67.1	17.5	2.12	2.67	1.36	8.41	1.69	2.92
	6	6.38	9.00	4.50	8.13	1.93	36.9	58.5	15.3	2.13	2.68	1.37	7.27	1.09	3.41
65x65	7	6.83	9.00	4.50	8.73	2.05	33.4	53.0	13.8	1.96	2.47	1.26	7.18	1.58	2.67
60x60	8	7.09	8.00	4.00	9.03	1.77	29.2	46.1	12.2	1.80	2.26	1.16	6.89	2.09	2.14
	6	5.42	8.00	4.00	6.91	1.69	22.8	36.1	9.44	1.82	2.29	1.17	5.29	0.922	2.90
	5	4.57	8.00	4.00	5.82	1.64	19.4	30.7	8.03	1.82	2.30	1.17	4.45	0.550	3.48
50x50	6	4.47	7.00	3.50	5.69	1.45	12.8	20.3	5.34	1.50	1.89	0.968	3.61	0.755	2.38
	5	3.77	7.00	3.50	4.80	1.40	11.0	17.4	4.55	1.51	1.90	0.973	3.05	0.450	2.88
	4	3.06	7.00	3.50	3.89	1.36	8.97	14.2	3.73	1.52	1.91	0.979	2.46	0.240	3.57
45x45	5	3.06	7.00	3.50	3.90	1.25	7.14	11.4	2.94	1.35	1.71	0.870	2.20	0.304	2.84
40x40	5	2.97	6.00	3.00	3.79	1.16	5.43	8.60	2.26	1.20	1.51	0.773	1.91	0.352	2.26
	4	2.42	6.00	3.00	3.08	1.12	4.47	7.09	1.86	1.21	1.52	0.777	1.55	0.188	2.83
35x35	4	2.09	5.00	2.50	2.67	1.00	2.95	4.68	1.23	1.05	1.32	0.678	1.18	0.158	2.50
30x30	4	1.78	5.00	2.50	2.27	0.878	1.80	2.85	0.754	0.892	1.12	0.577	0.850	0.137	2.07
	3	1.36	5.00	2.50	1.74	0.835	1.40	2.22	0.585	0.899	1.13	0.581	0.649	0.0613	2.75
25x25	4	1.45	3.50	1.75	1.85	0.762	1.02	1.61	0.430	0.741	0.931	0.482	0.586	0.1070	1.75
	3	1.12	3.50	1.75	1.42	0.723	0.803	1.27	0.334	0.751	0.945	0.484	0.452	0.0472	2.38
20x20	3	0.882	3.50	1.75	1.12	0.598	0.392	0.618	0.165	0.590	0.742	0.383	0.279	0.0382	1.81

Advance and UKA are trademarks of Corus. A fuller description of the relationship between Angles and the Advance range of sections manufactured by Corus is given on page A - 42.

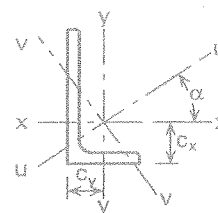
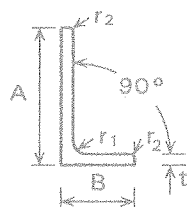
+ These sections are in addition to the range of BS EN 10056-1 sections.

c is the distance from the back of the leg to the centre of gravity.

FOR EXPLANATION OF TABLES SEE NOTES 2 AND 3

UNEQUAL ANGLES

Advance UKA - Unequal Angles



Dimensions and properties

Section Designation		Mass per Metre	Radius		Dimension		Second Moment of Area				Radius of Gyration			
Size	Thickness		Root	Toe			Axis x-x	Axis y-y	Axis u-u	Axis v-v	Axis x-x	Axis y-y	Axis u-u	Axis v-v
A x B mm	t mm	kg/m	r ₁ mm	r ₂ mm	c _x cm	c _y cm	cm ⁴	cm ⁴	cm ⁴	cm ⁴	cm	cm	cm	cm
200x150	18 +	47.1	15.0	7.50	6.33	3.85	2380	1150	2920	623	6.29	4.37	6.97	3.22
	15	39.6	15.0	7.50	6.21	3.73	2020	979	2480	526	6.33	4.40	7.00	3.23
	12	32.0	15.0	7.50	6.08	3.61	1650	803	2030	430	6.36	4.44	7.04	3.25
200x100	15	33.8	15.0	7.50	7.16	2.22	1760	299	1860	193	6.40	2.64	6.59	2.12
	12	27.3	15.0	7.50	7.03	2.10	1440	247	1530	159	6.43	2.67	6.63	2.14
	10	23.0	15.0	7.50	6.93	2.01	1220	210	1290	135	6.46	2.68	6.65	2.15
150x90	15	33.9	12.0	6.00	5.21	2.23	761	205	841	126	4.74	2.46	4.98	1.93
	12	21.6	12.0	6.00	5.08	2.12	627	171	694	104	4.77	2.49	5.02	1.94
	10	18.2	12.0	6.00	5.00	2.04	533	146	591	88.3	4.80	2.51	5.05	1.95
150x75	15	24.8	12.0	6.00	5.52	1.81	713	119	753	78.6	4.75	1.94	4.88	1.58
	12	20.2	12.0	6.00	5.40	1.69	588	99.6	623	64.7	4.78	1.97	4.92	1.59
	10	17.0	12.0	6.00	5.31	1.61	501	85.6	531	55.1	4.81	1.99	4.95	1.60
125x75	12	17.8	11.0	5.50	4.31	1.84	354	95.5	391	58.5	3.95	2.05	4.15	1.61
	10	15.0	11.0	5.50	4.23	1.76	302	82.1	334	49.9	3.97	2.07	4.18	1.61
	8	12.2	11.0	5.50	4.14	1.68	247	67.6	274	40.9	4.00	2.09	4.21	1.63
100x75	12	15.4	10.0	5.00	3.27	2.03	189	90.2	230	49.5	3.10	2.14	3.42	1.59
	10	13.0	10.0	5.00	3.19	1.95	162	77.6	197	42.2	3.12	2.16	3.45	1.59
	8	10.6	10.0	5.00	3.10	1.87	133	64.1	162	34.6	3.14	2.18	3.47	1.60
100x65	10 +	12.3	10.0	5.00	3.36	1.63	154	51.0	175	30.1	3.14	1.81	3.35	1.39
	8 +	9.94	10.0	5.00	3.27	1.55	127	42.2	144	24.8	3.16	1.83	3.37	1.40
	7 +	8.77	10.0	5.00	3.23	1.51	113	37.6	128	22.0	3.17	1.83	3.39	1.40
100x50	8	8.97	8.00	4.00	3.60	1.13	116	19.7	123	12.8	3.19	1.31	3.28	1.06
	6	6.84	8.00	4.00	3.51	1.05	89.9	15.4	95.4	9.92	3.21	1.33	3.31	1.07
80x60	7	7.36	8.00	4.00	2.51	1.52	59.0	28.4	72.0	15.4	2.51	1.74	2.77	1.28
80x40	8	7.07	7.00	3.50	2.94	0.963	57.6	9.61	60.9	6.34	2.53	1.03	2.60	0.838
	6	5.41	7.00	3.50	2.85	0.884	44.9	7.59	47.6	4.93	2.55	1.05	2.63	0.845
75x50	8	7.39	7.00	3.50	2.52	1.29	52.0	18.4	59.6	10.8	2.35	1.40	2.52	1.07
	6	5.65	7.00	3.50	2.44	1.21	40.5	14.4	46.6	8.36	2.37	1.42	2.55	1.08
70x50	6	5.41	7.00	3.50	2.23	1.25	33.4	14.2	39.7	7.92	2.20	1.43	2.40	1.07
65x50	5	4.35	6.00	3.00	1.99	1.25	23.2	11.9	28.8	6.32	2.05	1.47	2.28	1.07
60x40	6	4.46	6.00	3.00	2.00	1.01	20.1	7.12	23.1	4.16	1.88	1.12	2.02	0.855
	5	3.76	6.00	3.00	1.96	0.972	17.2	6.11	19.7	3.54	1.89	1.13	2.03	0.860
60x30	5	3.36	5.00	2.50	2.17	0.684	15.6	2.63	16.5	1.71	1.91	0.784	1.97	0.633
50x30	5	2.96	5.00	2.50	1.73	0.741	9.36	2.51	10.3	1.54	1.57	0.816	1.65	0.639
45x30	4	2.25	4.50	2.25	1.48	0.740	5.78	2.05	6.65	1.18	1.42	0.850	1.52	0.640
40x25	4	1.93	4.00	2.00	1.36	0.623	3.89	1.16	4.35	0.700	1.26	0.687	1.33	0.534
40x20	4	1.77	4.00	2.00	1.47	0.480	3.59	0.600	3.80	0.393	1.26	0.514	1.30	0.417
30x20	4	1.46	4.00	2.00	1.03	0.541	1.59	0.553	1.81	0.330	0.925	0.546	0.988	0.421
	3	1.12	4.00	2.00	0.990	0.502	1.25	0.437	1.43	0.256	0.935	0.553	1.00	0.424

Advance and UKA are trademarks of Corus. A fuller description of the relationship between Angles and the Advance range of sections manufactured by Corus is given on page A - 42.

+ These sections are in addition to the range of BS EN 10056-1 sections.

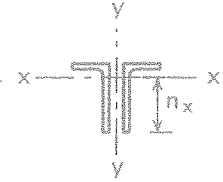
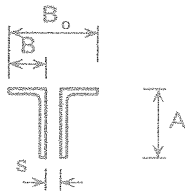
c_x is the distance from the back of the short leg to the centre of gravity.

c_y is the distance from the back of the long leg to the centre of gravity.

FOR EXPLANATION OF TABLES SEE NOTES 2 AND 3

UNEQUAL ANGLES BACK TO BACK

Advance UKA - Unequal Angles BACK TO BACK



Dimensions and properties

Composed of Two Angles		Total Mass per Metre kg/m	Distance n_x cm	Total Area cm ²	Properties about Axis x-x			Radius of Gyration r_y about Axis y-y (cm)				
A x B mm	t mm				I_x cm ⁴	r_x cm	Z_x cm ³	Space between angles, s, (mm)				
								0	8	10	12	15
200x150	18 +	94.2	13.7	120	4750	6.29	348	5.84	6.11	6.18	6.25	6.36
	15	79.2	13.8	101	4040	6.33	294	5.77	6.04	6.11	6.18	6.28
	12	64.0	13.9	81.6	3300	6.36	238	5.72	5.98	6.05	6.12	6.22
200x100	15	67.5	12.8	86.0	3520	6.40	274	3.45	3.72	3.79	3.86	3.97
	12	54.6	13.0	69.6	2880	6.43	222	3.39	3.65	3.72	3.79	3.90
	10	46.0	13.1	58.4	2440	6.46	186	3.35	3.61	3.67	3.74	3.85
150x90	15	53.2	9.79	67.8	1522	4.74	155	3.32	3.60	3.67	3.75	3.86
	12	43.2	9.92	55.0	1250	4.77	127	3.27	3.55	3.62	3.69	3.80
	10	36.4	10.0	46.4	1070	4.80	107	3.23	3.50	3.57	3.64	3.75
150x75	15	49.6	9.48	63.4	1430	4.75	150	2.65	2.94	3.01	3.09	3.21
	12	40.4	9.60	51.4	1180	4.78	123	2.59	2.87	2.94	3.02	3.14
	10	34.0	9.69	43.4	1000	4.81	103	2.56	2.83	2.90	2.97	3.08
125x75	12	35.6	8.19	45.4	708	3.95	86.4	2.76	3.04	3.11	3.19	3.30
	10	30.0	8.27	38.2	604	3.97	73.0	2.72	2.99	3.07	3.14	3.26
	8	24.4	8.36	31.0	494	4.00	59.2	2.68	2.95	3.02	3.09	3.20
100x75	12	30.8	6.73	39.4	378	3.10	56.0	2.95	3.24	3.31	3.39	3.51
	10	26.0	6.81	33.2	324	3.12	47.6	2.91	3.19	3.27	3.34	3.46
	8	21.2	6.90	27.0	266	3.14	38.6	2.87	3.15	3.22	3.29	3.41
100x65	10 +	24.6	6.64	31.2	308	3.14	46.4	2.43	2.72	2.79	2.87	2.99
	8 +	19.9	6.73	25.4	254	3.16	37.8	2.39	2.67	2.74	2.82	2.93
	7 +	17.5	6.77	22.4	226	3.17	33.2	2.37	2.65	2.72	2.79	2.91
100x50	8	17.9	6.40	22.8	232	3.19	36.4	1.73	2.02	2.09	2.17	2.29
	6	13.7	6.49	17.4	180	3.21	27.6	1.69	1.97	2.04	2.12	2.24
80x60	7	14.7	5.49	18.8	118	2.51	21.4	2.31	2.59	2.67	2.74	2.86
80x40	8	14.1	5.06	18.0	115	2.53	22.8	1.41	1.71	1.79	1.87	2.00
	6	10.8	5.15	13.8	89.8	2.55	17.5	1.37	1.66	1.74	1.82	1.94
75x50	8	14.8	4.98	18.8	104	2.35	20.8	1.90	2.19	2.27	2.35	2.47
	6	11.3	5.06	14.4	81.0	2.37	16.0	1.86	2.14	2.22	2.30	2.42
70x50	6	10.8	4.77	13.8	66.8	2.20	14.0	1.90	2.19	2.26	2.34	2.46
65x50	5	8.70	4.51	11.1	46.4	2.05	10.3	1.93	2.21	2.28	2.36	2.48
60x40	6	8.92	4.00	11.4	40.2	1.88	10.1	1.51	1.80	1.88	1.96	2.09
	5	7.52	4.04	9.58	34.4	1.89	8.50	1.49	1.78	1.86	1.94	2.06

Advance and UKA are trademarks of Corus. A fuller description of the relationship between Angles and the Advance range of sections manufactured by Corus is given on page A - 42.

+ These sections are in addition to the range of BS EN 10056-1 sections.

Properties about y-y axis:

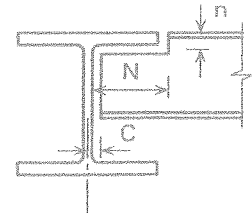
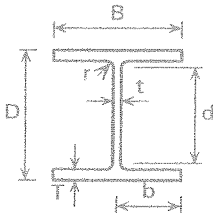
$$I_y = (\text{Total Area}) \cdot (r_y)^2$$

$$Z_y = I_y / (0.5B_0)$$

FOR EXPLANATION OF TABLES SEE NOTES 2 AND 3

UNIVERSAL COLUMNS

Advance UKC



Dimensions

Section Designation	Mass per Metre kg/m	Depth of Section D mm	Width of Section B mm	Thickness		Root Radius r mm	Depth between Fillets d mm	Ratios for Local Buckling		Dimensions for Detailing			Surface Area	
				Web t mm	Flange T mm			Flange b/T	Web d/t	End Clearance C mm	Notch		Per Metre m ²	Per Tonne m ²
											N mm	n mm		
356x406x634	633.9	474.6	424.0	47.6	77.0	15.2	290.2	2.75	6.10	26	200	94	2.52	3.98
356x406x551	551.0	455.6	418.5	42.1	67.5	15.2	290.2	3.10	6.89	23	200	84	2.47	4.48
356x406x467	467.0	436.6	412.2	35.8	58.0	15.2	290.2	3.55	8.11	20	200	74	2.42	5.18
356x406x393	393.0	419.0	407.0	30.6	49.2	15.2	290.2	4.14	9.48	17	200	66	2.38	6.06
356x406x340	339.9	406.4	403.0	26.6	42.9	15.2	290.2	4.70	10.9	15	200	60	2.35	6.91
356x406x287	287.1	393.6	399.0	22.6	36.5	15.2	290.2	5.47	12.8	13	200	52	2.31	8.05
356x406x235	235.1	381.0	394.8	18.4	30.2	15.2	290.2	6.54	15.8	11	200	46	2.28	9.70
356x368x202	201.9	374.6	374.7	16.5	27.0	15.2	290.2	6.94	17.6	10	190	44	2.19	10.8
356x368x177	177.0	368.2	372.6	14.4	23.8	15.2	290.2	7.83	20.2	9	190	40	2.17	12.3
356x368x153	152.9	362.0	370.5	12.3	20.7	15.2	290.2	8.95	23.6	8	190	36	2.16	14.1
356x368x129	129.0	355.6	368.6	10.4	17.5	15.2	290.2	10.5	27.9	7	190	34	2.14	16.6
305x305x283	282.9	365.3	322.2	26.8	44.1	15.2	246.7	3.65	9.21	15	158	60	1.94	6.86
305x305x240	240.0	352.5	318.4	23.0	37.7	15.2	246.7	4.22	10.7	14	158	54	1.91	7.96
305x305x198	198.1	339.9	314.5	19.1	31.4	15.2	246.7	5.01	12.9	12	158	48	1.87	9.44
305x305x158	158.1	327.1	311.2	15.8	25.0	15.2	246.7	6.22	15.6	10	158	42	1.84	11.6
305x305x137	136.9	320.5	309.2	13.8	21.7	15.2	246.7	7.12	17.90	9	158	38	1.82	13.3
305x305x118	117.9	314.5	307.4	12.0	18.7	15.2	246.7	8.22	20.6	8	158	34	1.81	15.4
305x305x97	96.9	307.9	305.3	9.9	15.4	15.2	246.7	9.91	24.9	7	158	32	1.79	18.5
254x254x167	167.1	289.1	265.2	19.2	31.7	12.7	200.3	4.18	10.4	12	134	46	1.58	9.46
254x254x132	132.0	276.3	261.3	15.3	25.3	12.7	200.3	5.16	13.1	10	134	38	1.55	11.7
254x254x107	107.1	266.7	258.8	12.8	20.5	12.7	200.3	6.31	15.6	8	134	34	1.52	14.2
254x254x89	88.9	260.3	256.3	10.3	17.3	12.7	200.3	7.41	19.4	7	134	30	1.50	16.9
254x254x73	73.1	254.1	254.6	8.6	14.2	12.7	200.3	8.96	23.3	6	134	28	1.49	20.4
203x203x127 +	127.5	241.4	213.9	18.1	30.1	10.2	160.8	3.55	8.88	11	108	42	1.28	10.0
203x203x113 +	113.5	235.0	212.1	16.3	26.9	10.2	160.8	3.94	9.87	10	108	38	1.27	11.2
203x203x100 +	99.6	228.6	210.3	14.5	23.7	10.2	160.8	4.44	11.1	9	108	34	1.25	12.6
203x203x86	86.1	222.2	209.1	12.7	20.5	10.2	160.8	5.10	12.7	8	110	32	1.24	14.4
203x203x71	71.0	215.8	206.4	10.0	17.3	10.2	160.8	5.97	16.1	7	110	28	1.22	17.2
203x203x60	60.0	209.6	205.8	9.4	14.2	10.2	160.8	7.25	17.1	7	110	26	1.21	20.2
203x203x52	52.0	206.2	204.3	7.9	12.5	10.2	160.8	8.17	20.4	6	110	24	1.20	23.1
203x203x46	46.1	203.2	203.6	7.2	11.0	10.2	160.8	9.25	22.3	6	110	22	1.19	25.8
152x152x51 +	51.2	170.2	157.4	11.0	15.7	7.6	123.6	5.01	11.2	8	84	24	0.935	18.3
152x152x44 +	44.0	166.0	155.9	9.5	13.6	7.6	123.6	5.73	13.0	7	84	22	0.924	21.0
152x152x37	37.0	161.8	154.4	8.0	11.5	7.6	123.6	6.71	15.5	6	84	20	0.912	24.7
152x152x30	30.0	157.6	152.9	6.5	9.4	7.6	123.6	8.13	19.0	5	84	18	0.901	30.0
152x152x23	23.0	152.4	152.2	5.8	6.8	7.6	123.6	11.20	21.3	5	84	16	0.889	38.7

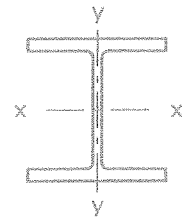
Advance and UKC are trademarks of Corus. A fuller description of the relationship between Universal Columns (UC) and the Advance range of sections manufactured by Corus is given on page A - 42.

+ These sections are in addition to the range of BS 4 sections.

FOR EXPLANATION OF TABLES SEE NOTE 2

UNIVERSAL COLUMNS

Advance UKC



Properties

Section Designation	Second Moment of Area		Radius of Gyration		Elastic Modulus		Plastic Modulus		Buckling Parameter u	Torsional Index x	Warping Constant H dm ⁶	Torsional Constant J cm ⁴	Area of Section A cm ²
	Axis x-x	Axis y-y	Axis x-x	Axis y-y	Axis x-x	Axis y-y	Axis x-x	Axis y-y					
	cm ⁴	cm ⁴	cm	cm	cm ³	cm ³	cm ³	cm ³					
356x406x634	275000	98100	18.4	11.0	11600	4630	14200	7110	0.843	5.46	38.8	13700	808
356x406x551	227000	82700	18.0	10.9	9960	3950	12100	6060	0.841	6.05	31.1	9240	702
356x406x467	183000	67800	17.5	10.7	8380	3290	10000	5030	0.839	6.86	24.3	5810	595
356x406x393	147000	55400	17.1	10.5	7000	2720	8220	4150	0.837	7.86	18.9	3550	501
356x406x340	123000	46900	16.8	10.4	6030	2330	7000	3540	0.836	8.85	15.5	2340	433
356x406x287	99900	38700	16.5	10.3	5070	1940	5810	2950	0.835	10.2	12.3	1440	366
356x406x235	79100	31000	16.3	10.2	4150	1570	4690	2380	0.834	12.1	9.54	812	299
356x368x202	66300	23700	16.1	9.60	3540	1260	3970	1920	0.844	13.4	7.16	558	257
356x368x177	57100	20500	15.9	9.54	3100	1100	3460	1670	0.844	15.0	6.09	381	226
356x368x153	48600	17600	15.8	9.49	2680	948	2960	1430	0.844	17.0	5.11	251	195
356x368x129	40200	14600	15.6	9.43	2260	793	2480	1200	0.844	19.9	4.18	153	164
305x305x283	78900	24600	14.8	8.27	4320	1530	5110	2340	0.855	7.65	6.35	2030	360
305x305x240	64200	20300	14.5	8.15	3640	1280	4250	1950	0.854	8.74	5.03	1270	306
305x305x198	50900	16300	14.2	8.04	3000	1040	3440	1580	0.854	10.2	3.88	734	252
305x305x158	38700	12600	13.9	7.90	2370	808	2680	1230	0.851	12.5	2.87	378	201
305x305x137	32800	10700	13.7	7.83	2050	692	2300	1050	0.851	14.2	2.39	249	174
305x305x118	27700	9060	13.6	7.77	1760	589	1960	895	0.850	16.2	1.98	161	150
305x305x97	22200	7310	13.4	7.69	1450	479	1590	726	0.850	19.3	1.56	91.2	123
254x254x167	30000	9870	11.9	6.81	2080	744	2420	1140	0.851	8.49	1.63	626	213
254x254x132	22500	7530	11.6	6.69	1630	576	1870	878	0.850	10.3	1.19	319	168
254x254x107	17500	5930	11.3	6.59	1310	458	1480	697	0.848	12.4	0.898	172	136
254x254x89	14300	4860	11.2	6.55	1100	379	1220	575	0.850	14.5	0.717	102	113
254x254x73	11400	3910	11.1	6.48	898	307	992	465	0.849	17.3	0.562	57.6	93.1
203x203x127 +	15400	4920	9.75	5.50	1280	460	1520	704	0.854	7.38	0.549	427	162
203x203x113 +	13300	4290	9.59	5.45	1130	404	1330	618	0.853	8.11	0.464	305	145
203x203x100 +	11300	3680	9.44	5.39	988	350	1150	534	0.852	9.02	0.386	210	127
203x203x86	9450	3130	9.28	5.34	850	299	977	456	0.850	10.2	0.318	137	110
203x203x71	7620	2540	9.18	5.30	706	246	799	374	0.853	11.9	0.250	80.2	90.4
203x203x60	6120	2060	8.96	5.20	584	201	656	305	0.846	14.1	0.197	47.2	76.4
203x203x52	5260	1780	8.91	5.18	510	174	567	264	0.848	15.8	0.167	31.8	66.3
203x203x46	4570	1550	8.82	5.13	450	152	497	231	0.847	17.7	0.143	22.2	58.7
152x152x51 +	3230	1020	7.04	3.96	379	130	438	199	0.848	10.1	0.061	48.8	65.2
152x152x44 +	2700	860	6.94	3.92	326	110	372	169	0.848	11.5	0.050	31.7	56.1
152x152x37	2210	706	6.85	3.87	273	91.5	309	140	0.848	13.3	0.040	19.2	47.1
152x152x30	1750	560	6.76	3.83	222	73.3	248	112	0.849	16.0	0.031	10.5	38.3
152x152x23	1250	400	6.54	3.70	164	52.6	182	80.1	0.840	20.7	0.021	4.63	29.2

Advance and UKC are trademarks of Corus. A fuller description of the relationship between Universal Columns (UC) and the Advance range of sections manufactured by Corus is given on page A - 42.

+ These sections are in addition to the range of BS 4 sections.

FOR EXPLANATION OF TABLES SEE NOTE 3