

FACULTY OF ALLIED HEALTH SCIENCES
UNIVERSITY OF RUHUNA
Department of Medical Laboratory Science
Year End Examination – Year 1

9th Batch – Medical Laboratory Practice (Theory)

Friday 29th June 2016

Time: 8.30 a.m.- 9.30a.m.

Duration: 1 hour

Answer both questions.

Index Number:.....

77

1.

1.1. Write two precautions that should be taken while handling a water bath.

(05 marks)

.....
.....
.....
.....
.....
.....

1.2. Write four precautions that should be taken while operating a centrifuge in a laboratory.

(10 marks)

.....
.....
.....
.....
.....
.....

1.3. Write short notes on following

1.3.1. Calibration of the instruments

(20 marks)

.....
.....
.....
.....
.....

77



.....

.....

.....

.....

.....

.....

1.3.2. Ensuring of the durability of laboratory equipment (20marks)

.....

.....

.....

.....

.....

.....

.....

.....

.....

.....

.....

.....

.....

.....

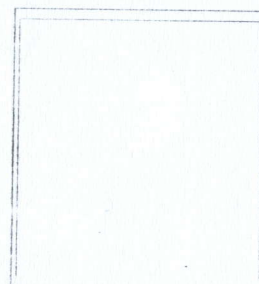
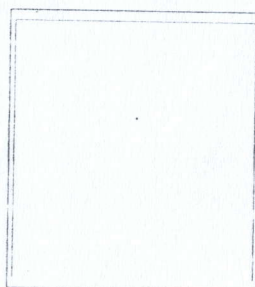
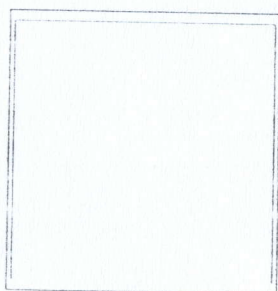
.....

1.4. Draw the standard symbols to denote the following dangers in the spaces given below. (15 marks)

(a) Flammable

(b) Explosive

(c) Toxic





1.5. Draw a labeled diagram indicating the basic components of a spectrophotometer.

(15 marks)

76

1.6. State the functions of each of the basic component of the spectrophotometer mentioned in 1.5 above.

(15 marks)

.....

.....

.....

.....

.....

.....

.....

.....

.....

.....

.....

.....

.....

.....

.....

.....

.....

.....

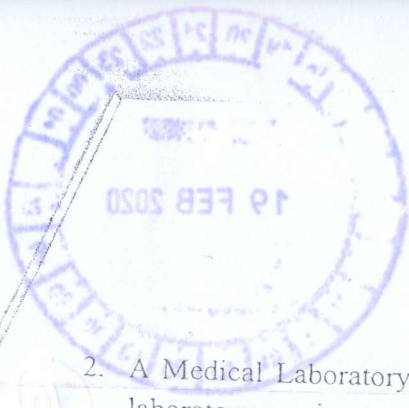
.....

.....

.....

.....

76



2. A Medical Laboratory Technologist is working in a laboratory at a Base hospital. This laboratory receives samples for investigations on haematology, microbiology and clinical biochemistry. However, this laboratory does not have a proper report format to issue results.

2.1. Briefly explain the good practices in sample reception to minimize the errors.
(25 marks)

.....

.....

.....

.....

.....

.....

.....

.....

.....

.....

.....

.....

.....

.....

.....

.....

.....

.....

.....

.....

.....

.....

.....

2.2. State safety precautions to be considered while performing haematological investigations.
(25 marks)

.....

.....

.....

.....

.....

.....

.....

.....

.....

.....

.....

.....

.....

.....

.....

.....

.....

.....

.....

.....

.....

.....

.....

.....



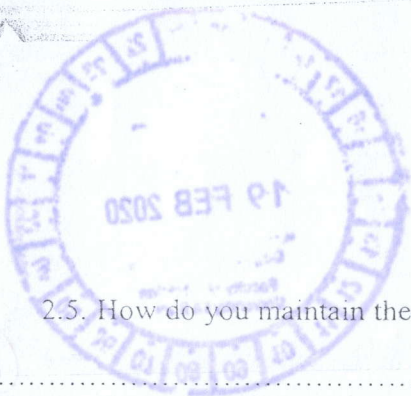
75

2.3. Briefly describe waste disposal methods that could be used in the above laboratory setup. (25 marks)

Dotted lines for writing the answer to question 2.3.

2.4. Design a proper laboratory report to issue results. (10 marks)

75



2.5. How do you maintain the confidentiality of laboratory reports?

(15 marks)

.....

.....

.....

.....

.....

.....

.....

.....

.....

.....

.....

.....

.....

.....

.....

.....

.....