

UNIVERSITY OF RUHUNA
BACHELOR OF SCIENCE IN FISHERIES AND MARINE SCIENCES DEGREE
Level I Semester II - Dec/Jan 2015/2016

CLC 1b10 COMPUTER LITERACY
Answer all questions

Time: 02 hours

01.

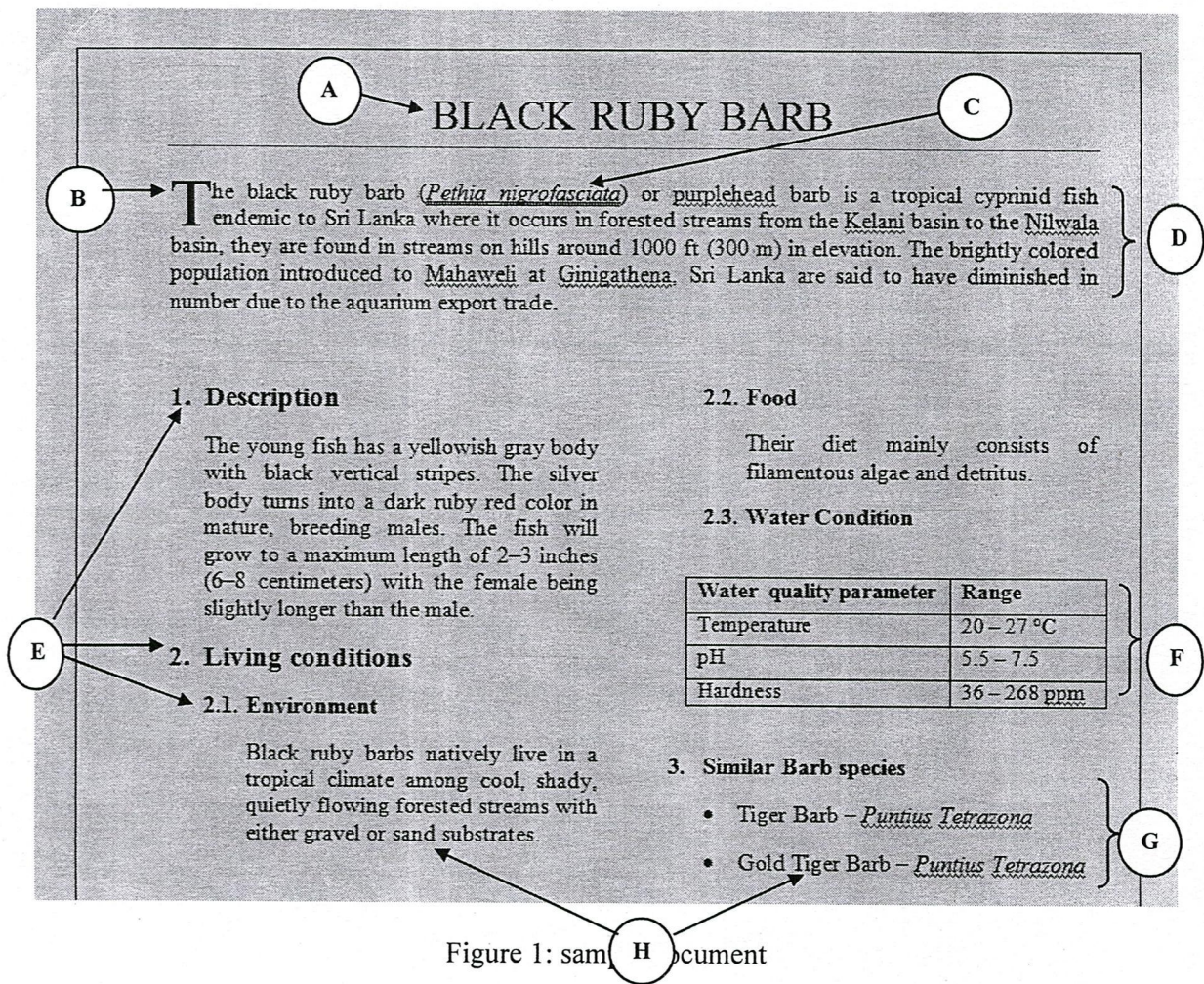
- a. What are the four main classified categories of a computer system? Briefly explain them.
- b. What is a computer virus?
- c. How do you prevent and remove viruses from your computer (Provide four points).
- d. List the four different Types of Personal Computers.

[15 marks]

02.

- a. Write four advantages of using word processing packages.
- b. What is mail merge?
- c. Consider the MS word document shown in the following **Figure 1** and write necessary steps to perform different formattings, indicated by labels from "A" to "H". Brief descriptions of formatting requirements indicated by labels from "A" to "H" are given below.

[20marks]



A: Title of the document

B: Size of the first letter of the paragraph is equal to double lines.

C: Italic and underline (using double lines)

D: Justified paragraph

E: Define the heading and sub headings using the numbering format

F: Content is arranged in a table structure.

G: Use bullets

H: Text content is divided into two columns

03.

- a. What is MS PowerPoint?
- b. Write four objects which can be included in a PowerPoint slide.
- c. Write the names of the commonly used controllers labeled from A to E in Figure 2 given below.

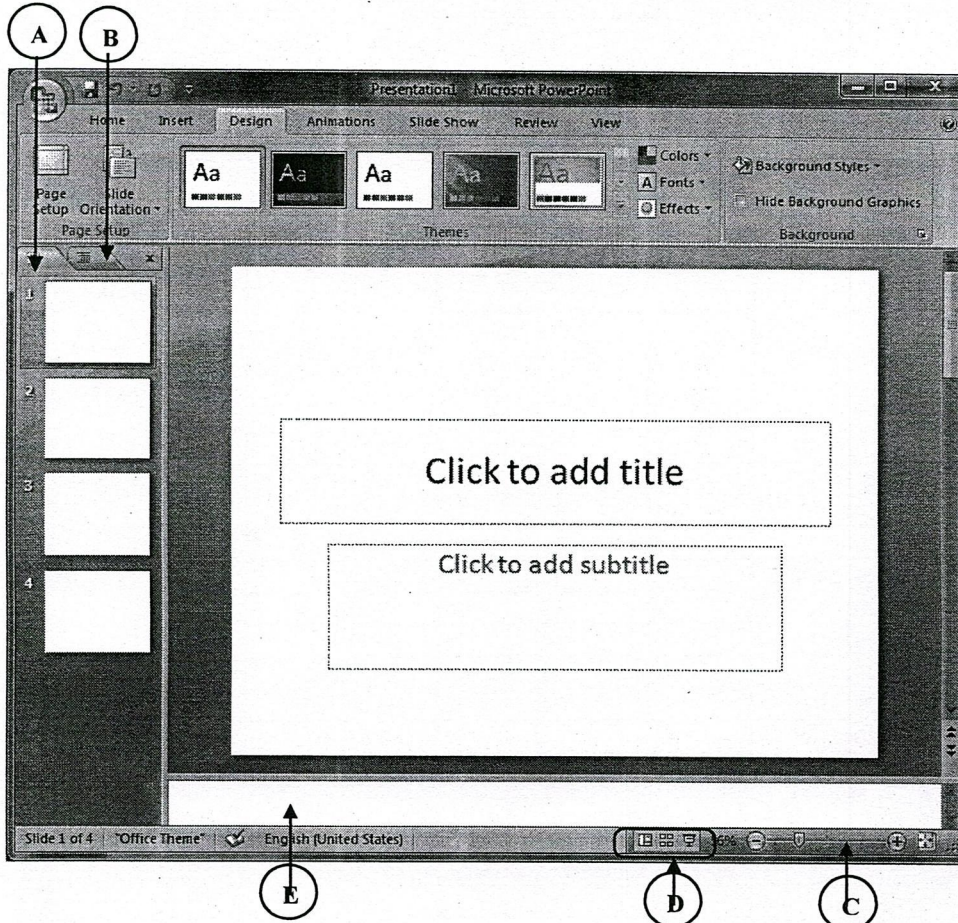


Figure 2: MS power point package

- d. Write the steps to perform the following tasks.
 - i. Insert a video file in to a power point slide.
 - ii. Add an animation effect for slides transition.

[15 marks]

- 04.
- What is a spreadsheet?
 - What are the advantages of using spreadsheet packages?
 - Figure 3 given below shows two types of cell formatting applied for an Examination Results table in MS Excel. Writes the necessary steps for performing two formattings labeled as "A" and "B" in the figure

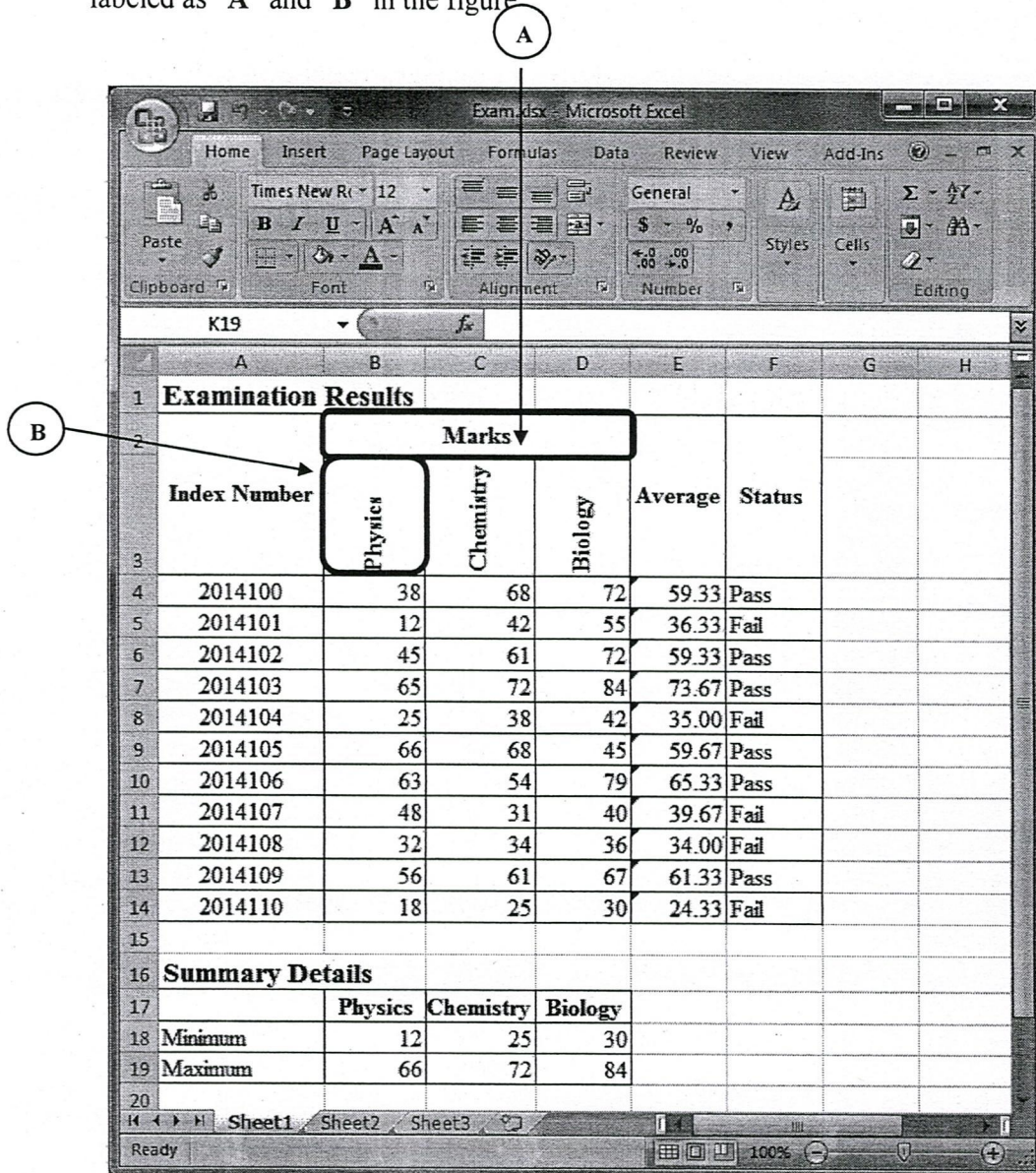


Figure 3: examination details of the Grade 12-A students

- Write formulas to perform following tasks.
 - Calculate the average mark for the students as shown in the figure.
 - Get the calculated Average marks in column E in two decimal points.
 - To set the "Status" column to "Pass" if the average mark for a student is greater than or equal to fifty (≥ 50), and otherwise to "Fail"
 - Find the minimum and maximum marks obtained by the students for the subject "Physics" as shown in the figure.

[25 marks]

05.

- a. What is a database?
- b. Write the relationship between primary key and foreign keys in relational databases?
- c. Write the five data types using a suitable example.

MS access database maintains two tables such as "StudentDetails" and "ExamMarks", to keep students details. Structure of the tables are as follows. Answer following two questions based on these tables.

Table "Student Details"

Index Number	Initials	LastName	Address	DOB	NIC
20141000	K.K.A.A.	KUMARASINGHE	NO 243 Maharagama	1998-12- 16	981920823V

Table "Exam Marks "

Index Number	ExamYear	Physics	Chemistry	Biology
20141000	2014	56	65	72

- d. Define suitable data types and field sizes for the fields of the table "StudentDetails".
- e. Answer following questions using the "Figure 4" given below.

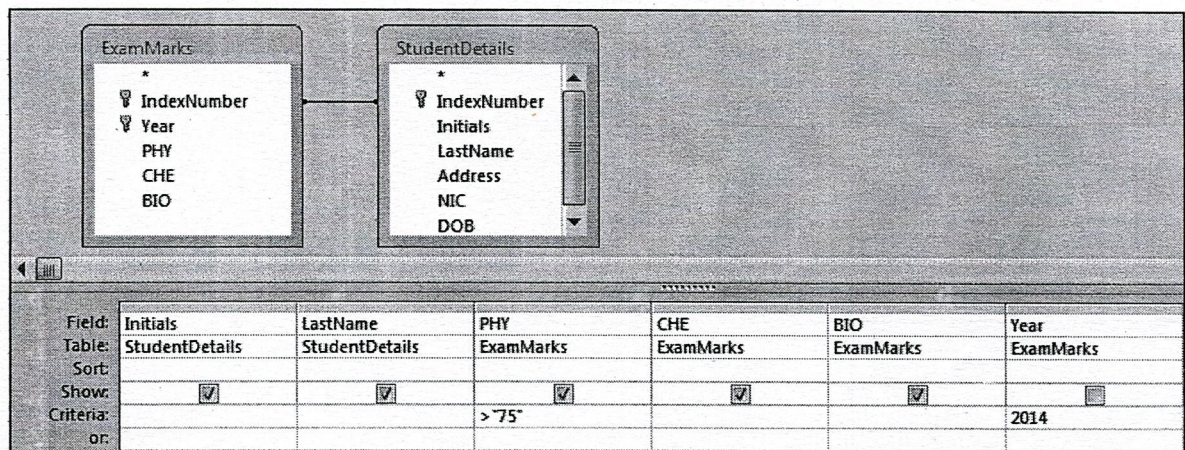


Figure 4

- i. What are the displayed fields of the query?
- ii. What is the filtering criterion shown in the query design view in the figure?

[25 marks]

@@@@@@@@