

UNIVERSITY OF RUHUNA  
 BACHELOR OF SCIENCE IN FISHERIES AND MARINE SCIENCES DEGREE  
 Level I Semester I – 2017 July / August

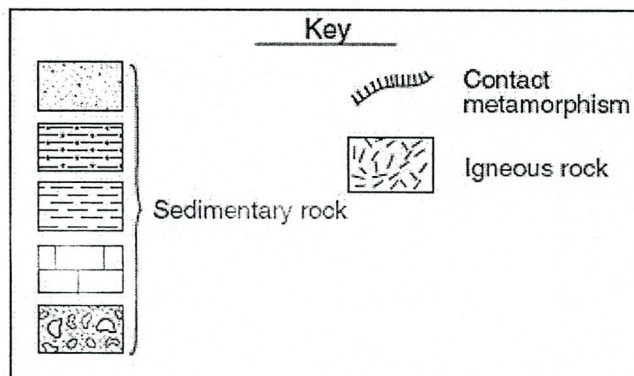
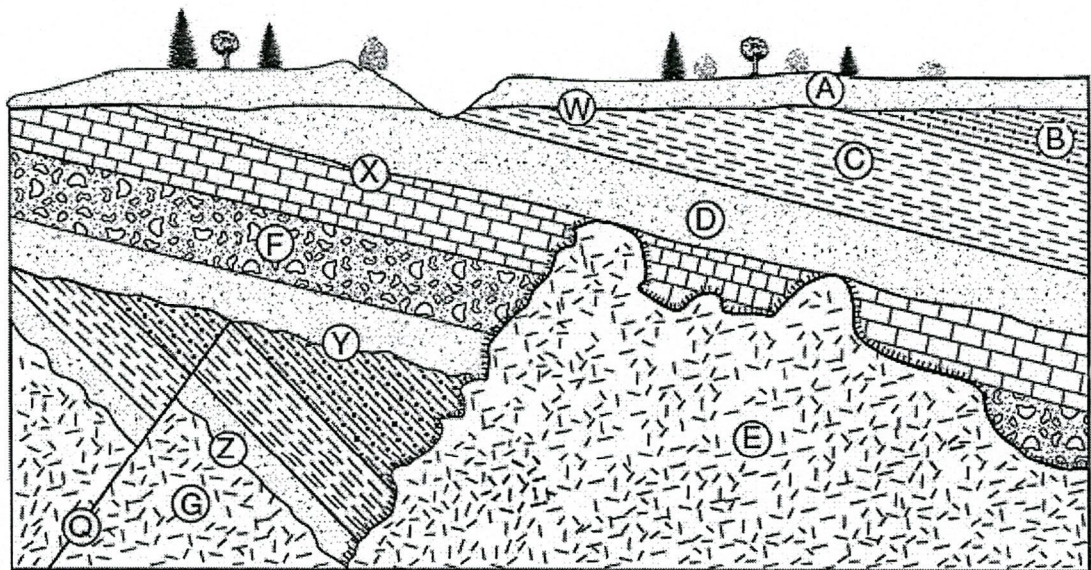
**OCG1112 – INTRODUCTION TO OCEANOGRAPHY (REPEAT)**

Answer any Four (04) questions

**Time: 02 hours**

01. Explain the difference between any two (02) phrases given below with appropriate drawings.
- Angular Unconformity and Disconformity
  - Dip and Strike
  - Terrestrial Planets and Icy Planets in our solar system
- (25 Marks)

02. The figure given below shows geological cross sections with different geological processes.



- Based on the geological evolutionary sequence, assign the correct number for each events in the space given below (Youngest = 1, ....., Oldest =12)

A=            B=            C =            D =  
E =            F =            G =            Q =  
W =            X =            Y =            Z =

(1x12 Marks)

b. Briefly explain the geological evolution of the area

(13 Marks)

03. Write shortnotes on any **three** of the following

- a. Big Bang Theory
- b. Geologic Time Scale
- c. Nebula Hypothesis
- d. Angular Unconformity

(25 Marks)

04. i. Briefly explain UNCLOS

(10 Marks)

ii. What is the difference between legal continental shelf and the geological continental shelf? Explain

(15 Marks)

05. i. Write a short note on submersible vehicles used in oceanography

(10 Marks)

ii. Write an essay on any world renowned Marine Research Institute

(15 Marks)

06. i. Write a short note on Challenger Expedition

(10 Marks)

ii. What are the major stages in evolution of oceanography?

(15 Marks)

@@@@@@@@