



රුහුණ විශ්ව විද්‍යාලය

**UNIVERSITY OF RUHUNA**  
**FACULTY OF MEDICINE**  
**GALLE.**

**PAEDIATRICS PAPER I**

**28.04.2005**

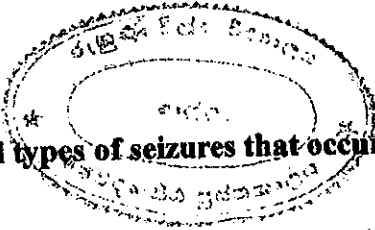
**9.00 am. – 12.00 noon**

Duration 3 hours

1. There are five parts (A,B,C,D and E).
2. There are two questions in Part A.  
There is one question each in Part B.C.D and E.
3. Please answer all six questions.
4. Answer each part in the space provided.
5. Write the index number on the space provided on top of each part.







**Q2**

**2.1 What are the 4 main clinical types of seizures that occur in neonates? (20 marks)**

.....

.....

.....

.....

.....

**2.2.1 What is jitteriness? (10 marks)**

.....

.....

.....

.....

**2.2.2 What is the importance of identifying jitteriness? (5 marks)**

.....

.....

.....

**2.2.3 Name 3 situations that would predispose to jitteriness.(10 marks)**

.....

.....

.....

**2.3 Mention the biochemical investigations that would help you to identify the cause of neonatal seizures.(20 marks)**

.....

.....

.....

.....

.....

.....

.....  
.....  
.....  
.....  
.....  
.....  
.....  
.....  
.....  
.....

**2.4 List the useful findings in history and clinical examination that would help you to suspect a metabolic disease. (20 marks)**

.....  
.....  
.....  
.....  
.....  
.....  
.....  
.....  
.....  
.....  
.....  
.....  
.....  
.....  
.....  
.....  
.....  
.....  
.....  
.....  
.....

**2.5 Mention 3 commonly used drugs in the emergency management of neonatal seizures and how they administrated? (Dosages are not required).(15 marks)**

.....  
.....  
.....  
.....

















**PART D INDEX NO.....**

**Q6. 8 year old girl presented with high fever, headache and myalgia of 5 days duration. On examination she was febrile, flushed and had tender hepatomegaly. Her blood pressure was 100/60 and the pulse rate was 90/min. On the 2<sup>nd</sup> day of admission she developed a non blanching erythematous rash over both upper limbs and lower limbs.**

**6.1 What is the most likely diagnosis? ( 5 marks)**

.....  
.....

**6.2 What other physical signs that would help in establishing the diagnosis? (10 marks)**

.....  
.....  
.....  
.....  
.....  
.....  
.....  
.....  
.....  
.....

**6.3 Discuss the investigations you would perform in this child. (15 marks)**

.....  
.....  
.....  
.....  
.....  
.....  
.....  
.....  
.....  
.....  
.....  
.....  
.....  
.....  
.....





