

**UNIVERSITY OF RUHUNA**  
**THIRD EXAMINATION IN B.Sc. IN GREEN TECHNOLOGY (PART II)- November 2022**

Indigenous Knowledge Systems ID3203

Time: 30 minutes

MCQ Type

Index No: Library copy

Answer all questions.

Please ensure that you have written your index number in the space provided above.

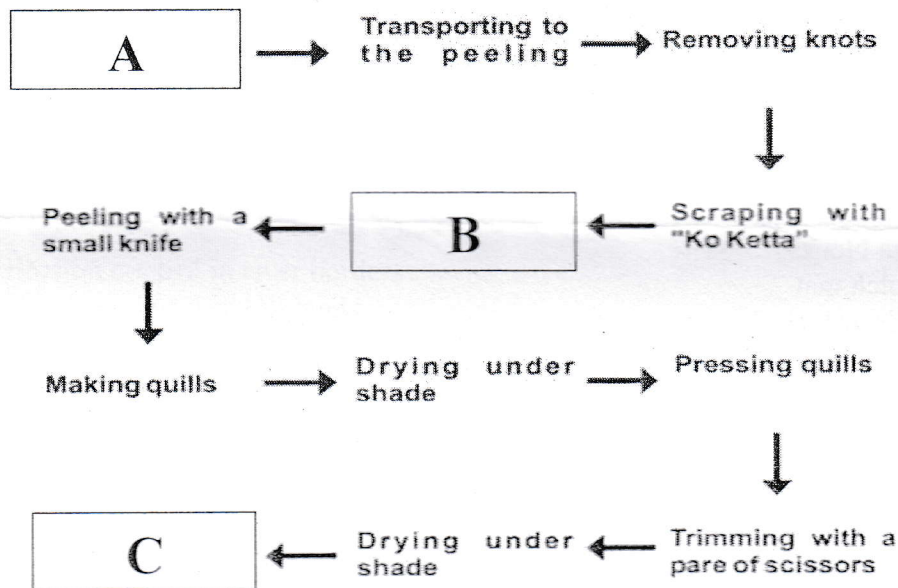
Each question has 5 answers, indexed under (a), (b), (c), (d) and (e).

Mark the correct answer by placing "✓".

Only one answer should be marked in each question. If more than one answer is marked for a question, that question will not be evaluated.

Only non-programmable calculators are permitted.

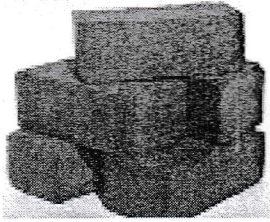
Diagrams for Question number 01--.



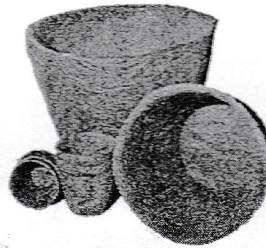
1. Select the *correct* statement to complete the above Cinnamon processing steps

- (a). A- Rubbing with a Brass rod ,B- Removing knots and C- Making bundles of 45 kg each
- (b). A- Removing knots ,B- Rubbing with a Brass rod and C- Making bundles of 30 kg each
- (c). A- Removing knots ,B- Making bundles of 45 kg each and C- Rubbing with a Brass rod
- (d). A- Making bundles of 45 kg each ,B- Rubbing with a Brass rod and C- Removing knots
- (e). A- harvesting ,B- Rubbing with a Brass rod and C- Making bundles of 45 kg each

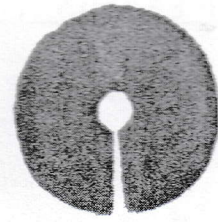
Diagrams for Question numbers 2 to 6.



A



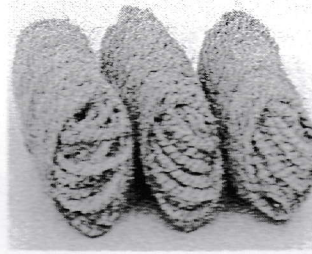
B



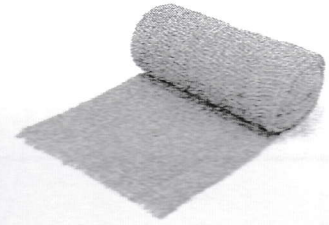
C



D



E



F

Figure: A, B, C, D, E and F indicate the different coir product

2. Figure A is indicated;

- (a). Coir Geotextiles
- (b). Coir pot
- (c). Coir peat blocks
- (d). Coir mulch mat
- (e). Coir rolls or logs

3. Figure B is indicated;

- (a). Coir Geotextiles
- (b). Coir pot
- (c). Coir peat blocks
- (d). Coir mulch mat
- (e). Coir rolls or logs

4. Figure C is indicated;

- (a). Coir Geotextiles
- (b). Coir pot
- (c). Coir peat blocks
- (d). Coir mulch mat
- (e). Coir rolls or logs

5. Figure D is indicated;

- (a). Coir Geotextiles
- (b). Coir twine & ropes
- (c). Coir peat blocks
- (d). Coir mulch mat
- (e). Coir rolls or logs

6. Figure E is indicated;

- (a). Coir Geotextiles
- (b). Coir pot
- (c). Coir peat blocks
- (d). Coir twine & ropes
- (e). Coir rolls or logs

7 Select the correct statement.

- (a) **Indigenous Knowledge is not static but dynamic**
- (b) Indigenous Knowledge is recorded and transferred through oral tradition
- (c) Indigenous Knowledge is learned through observation and hands –on experience
- (d) Indigenous Knowledge is reflecting local tradition
- (e) Above all

8 Coir Geotextiles is used to;

- (a). Erosion control in river borders
- (b). Erosion control in hill lands
- (c). planting or as Self-degradable container
- (d). Natural mulching or weeding
- (e). improve the soil moisture holding capacity

9. Coir rolls or logs is used to;

- (a). Erosion control in river borders
- (b). Erosion control in hill lands
- (c). planting or as Self-degradable container
- (d). Natural mulching or weeding
- (e). improve the soil moisture holding capacity

10. Coir mulch mat is used to;

- (a). Erosion control in river borders
- (b). Erosion control in hill lands
- (c). planting or as Self-degradable container
- (d). Natural mulching or weeding
- (e). improve the soil moisture holding capacity

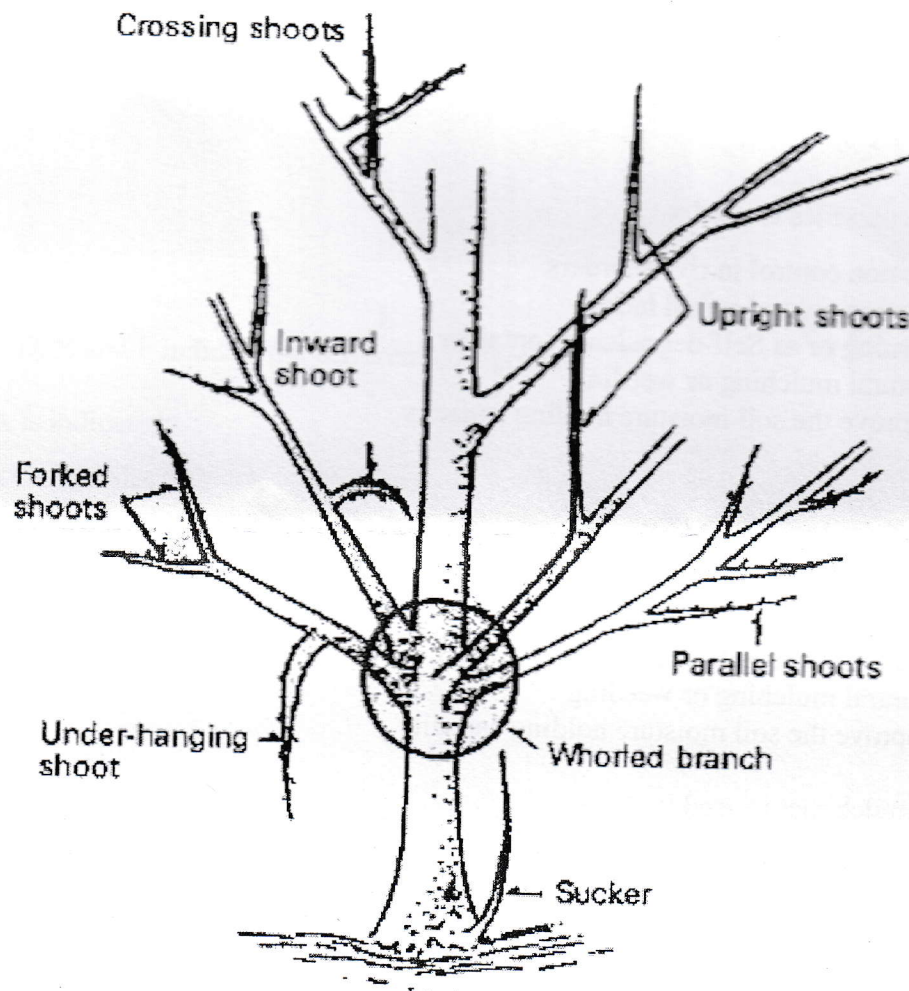
11. Coir peat blocks is used to;

- (a). Erosion control in river borders
- (b). Erosion control in hill lands
- (c). planting or as Self-degradable container
- (d). Natural mulching or weeding
- (e). improve the soil moisture holding capacity

12. Coir pot is used to;

- (a). Erosion control in river borders
- (b). Erosion control in hill lands
- (c). planting or as Self-degradable container
- (d). Natural mulching or weeding
- (e). improve the soil moisture holding capacity

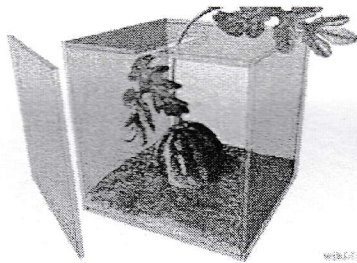
Diagrams for Question number 13.



13. To train the above fruit tree;

- (a). Remove suckers only
- (b). Remove under-hanging shoot only
- (c). Remove upright shoots only
- (d). Remove crossing shoots only
- (e). Remove above all types

Diagrams for Question numbers 14 and 16.



A



B



C

Identify 'types of crop growing technique' given in Figure; A,B and ~~B~~ C

14. The figure A is indicated;

- (a). packing technique of water melon
- (b). packing technique of giant pumpkins
- (c). Growing technique of Square watermelon
- (d). Growing technique of giant pumpkins
- (e). Pest control method

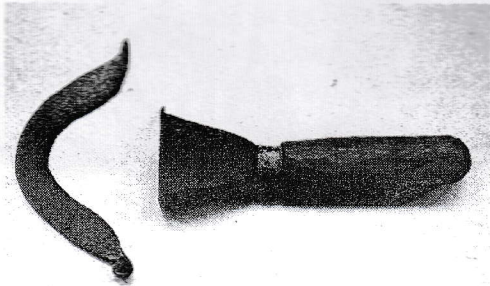
15. The figure B is indicated;

- (a). packing technique of water melon
- (b). packing technique of giant pumpkins
- (c). Growing technique of square watermelon
- (d). Growing technique of giant pumpkins
- (e). Growing technique of square bamboo

16. The figure C is indicated;

- (a). packing technique of water melon
- (b). packing technique of giant pumpkins
- (c). Growing technique of square bamboo
- (d). Growing technique of giant pumpkins
- (e). Pest control method

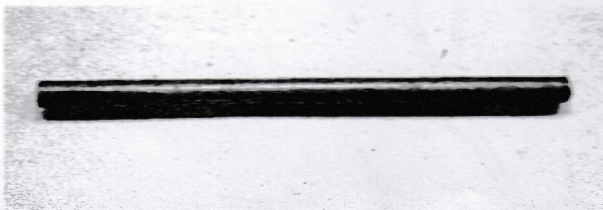
Diagrams for Question numbers 17 and 20



A



B



C



D

17. Figure A is indicated;

- (a). Cinnamon harvesting knife
- (b). Cinnamon stick scraping tools
- (c). Cinnamon stick rubbing tools
- (d). Cinnamon Peeling tools
- (e). Hand presses the outside edges

18. Figure B is indicated;

- (a). Cinnamon harvesting knife
- (b). Cinnamon stick scraping tools
- (c). Cinnamon stick rubbing tools
- (d). Cinnamon Peeling tools
- (e). Hand presses the outside edges

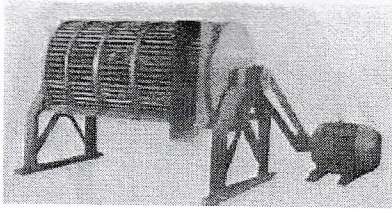
19. Figure C is indicated;

- (a). Cinnamon harvesting tool
- (b). Cinnamon stick scraping tools
- (c). Cinnamon stick rubbing tools
- (d). Cinnamon Peeling tools
- (e). Hand presses the outside edges

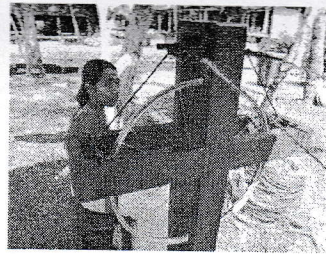
20. Figure D is indicated;

- (a). Cinnamon harvesting tool
- (b). Cinnamon stick scraping tools
- (c). Cinnamon stick rubbing tools
- (d). Cinnamon Peeling tools
- (e). Hand press the outside edges

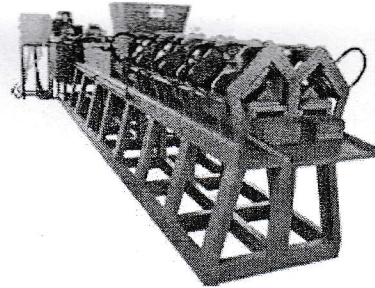
Diagrams for Question number 21 -23.



A



B



C

21. Machine A is used to;

- (a). Coir Geotextiles production
- (b). Coir pot production
- (c). Coir peat blocks production
- (d). Coir fiber rope production
- (e). Coir production

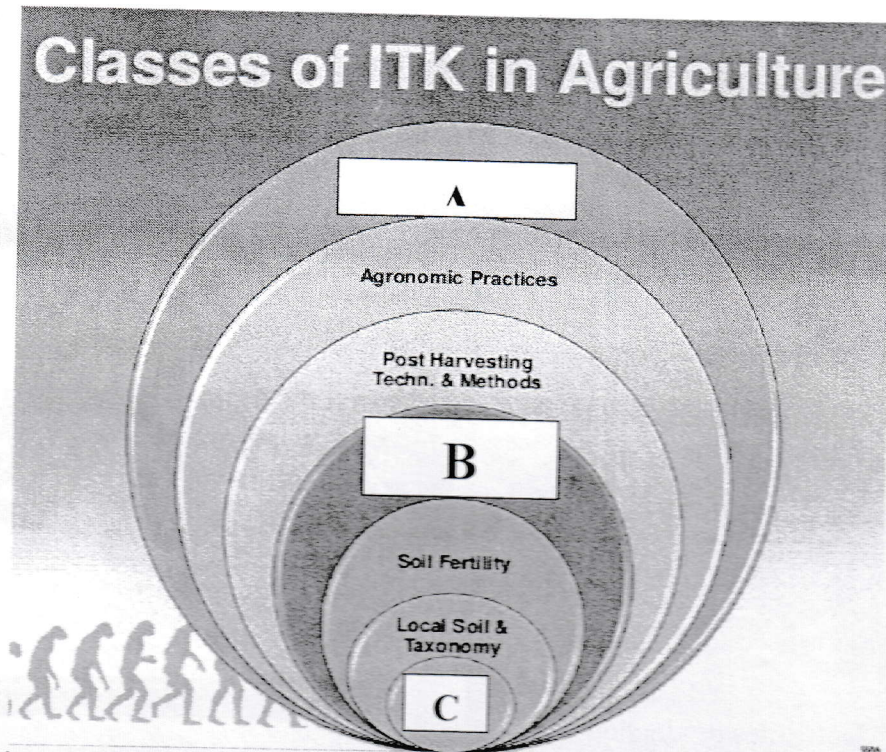
22. Machine B is used to;

- (a). Coir Geotextiles production
- (b). Coir pot production
- (c). Coir peat blocks production
- (d). Coir fiber rope production
- (e). Coir production

23. Machine C is used to;

- (a). Coir Geotextiles production
- (b). Coir pot production
- (c). Coir peat blocks production
- (d). Coir fiber rope production
- (e). Coir production

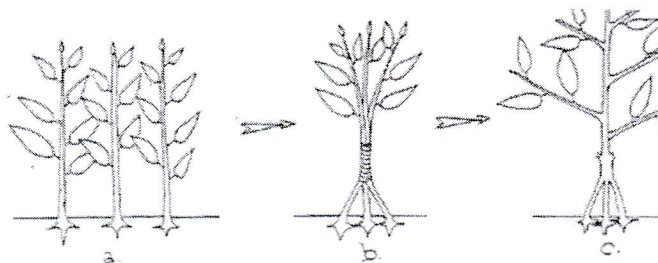
Diagrams for Question number 24.



24. Select the *correct* statement to complete the above Classes

- (a). A- Climatology, B- Irrigation and water management and C- Plant Protection
- (b). A- Plant Protection, B- Climatology and C- Irrigation and water management
- (c). A-Harvesting, B- Climatology and C- Plant Protection
- (d). A- Irrigation and water management, B- Climatology and C- Harvesting
- (e). A- Irrigation and water management, B- Plant Protection and C- Climatology

Diagrams for Question number 25.



25. Figure is indicated;

- (a). Phyto technique of water melon
- (b). crop improvement technique of giant pumpkins
- (c). Growing technique of square watermelon
- (d). Traditional Yield improvement technique for rambutan plant
- (e). Growing technique of square bamboo

@@@@@@@@@@@@@@@@@@@@